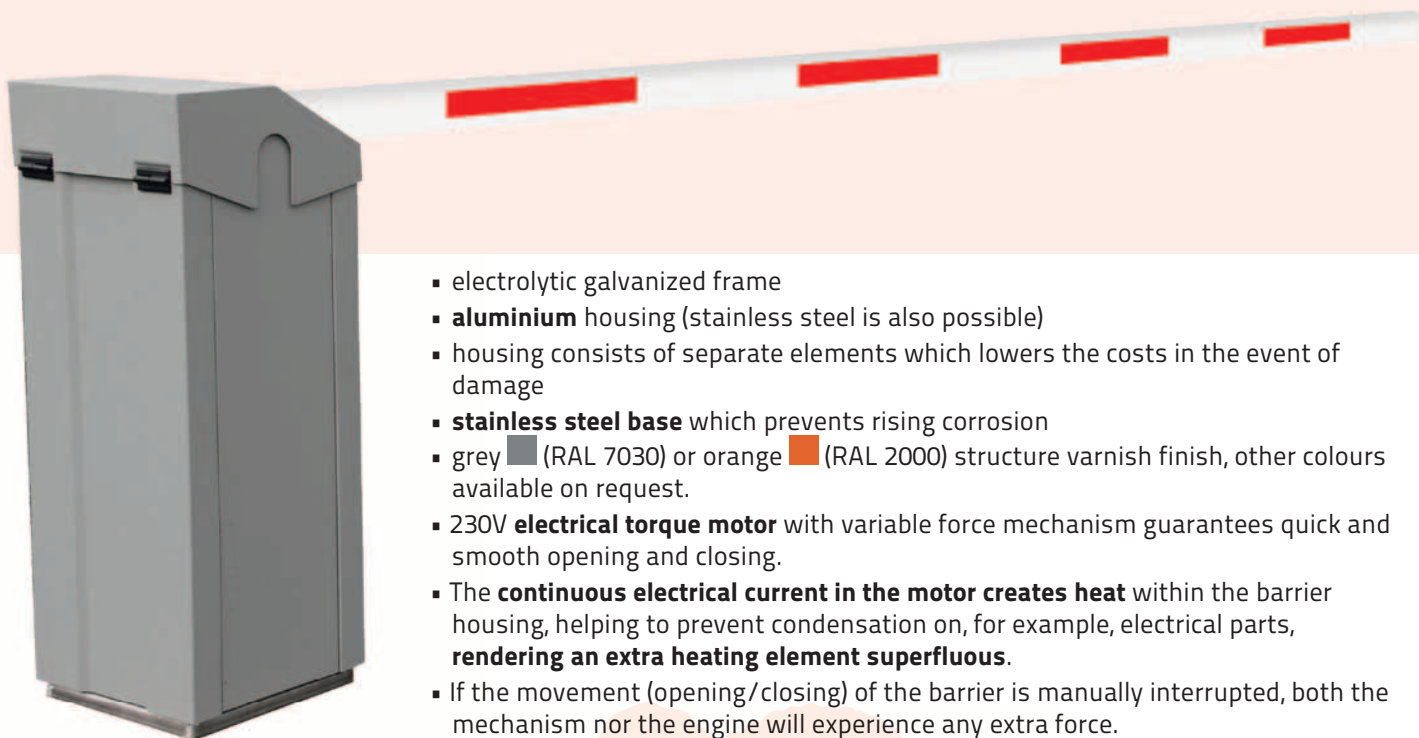




Barrier up to 7 meters with stand alone controller or via RS485

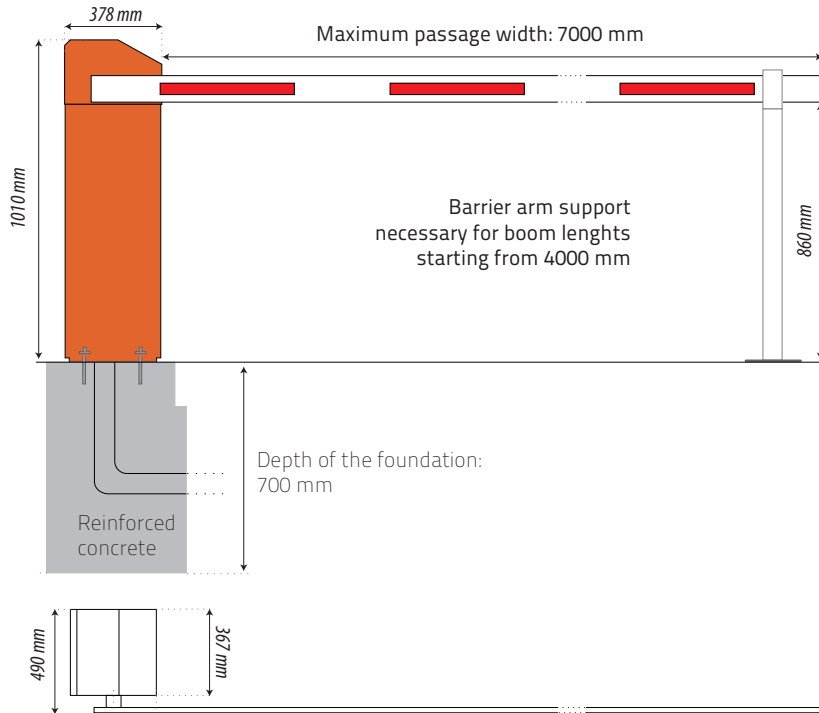
**Torqus Magnus, the Alphatronics barrier with torque motor, constructed from modular elements, with its round barrier arm has a maximum reach of 7 meters. The main mechanical system responsible for opening and closing is supported by a solid frame which saves the essential parts from a large load.**



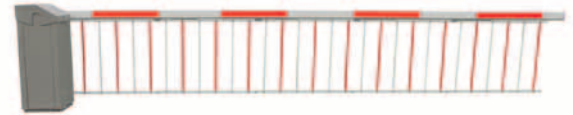
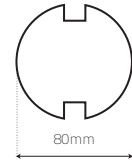
- electrolytic galvanized frame
- **aluminium** housing (stainless steel is also possible)
- housing consists of separate elements which lowers the costs in the event of damage
- **stainless steel base** which prevents rising corrosion
- grey (RAL 7030) or orange (RAL 2000) structure varnish finish, other colours available on request.
- 230V **electrical torque motor** with variable force mechanism guarantees quick and smooth opening and closing.
- The **continuous electrical current in the motor creates heat** within the barrier housing, helping to prevent condensation on, for example, electrical parts, **rendering an extra heating element superfluous.**
- If the movement (opening/closing) of the barrier is manually interrupted, both the mechanism nor the engine will experience any extra force.
- The variable force mechanism of the drive shaft **prevents** the barrier arm **from slamming and/or bumping** at the end of each movement.
- **In line with the new manufacturing guidelines**, whereby for example the current is immediately interrupted as soon as the housing is opened.
- In the event of power failure or routine check, authorised personnel can **easily and without the use of tools manually open/close the barrier.**
- **All parts are easily accessible** (assembly or maintenance) thanks to the fully **detachable housing.**
- A left handed barrier can easily be transformed into a right handed barrier.
- Every design up to 7 meters supports the same type of motor. The necessary speed is obtained by changing the standard chain wheels.
- Thanks to the torque engine and springs, the structure remains balanced in every position and the **forces are equally distributed.** A moving barrier arm can be stopped using little force.
- The round barrier arm consists of white varnished aluminium with red reflective strips, slots at the top and bottom in order to confirm the options. PVC caps at the ends of the barrier arm.



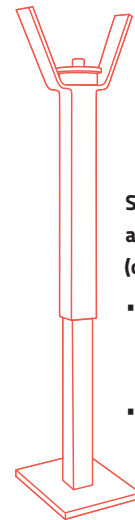
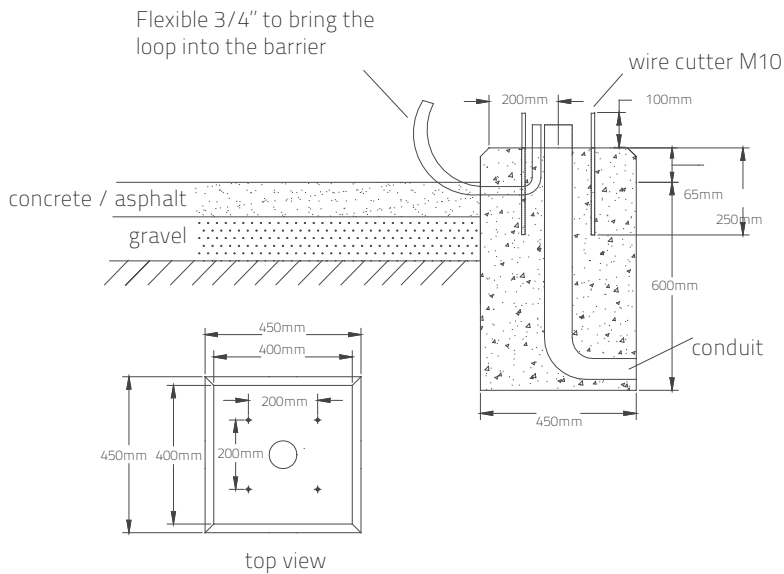
# Technical specifications



profile barrier arm (mm)

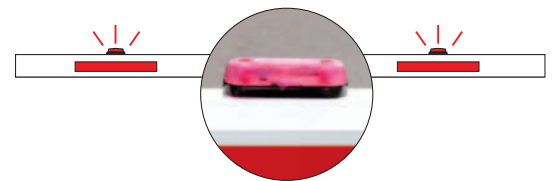


Barrier skirt

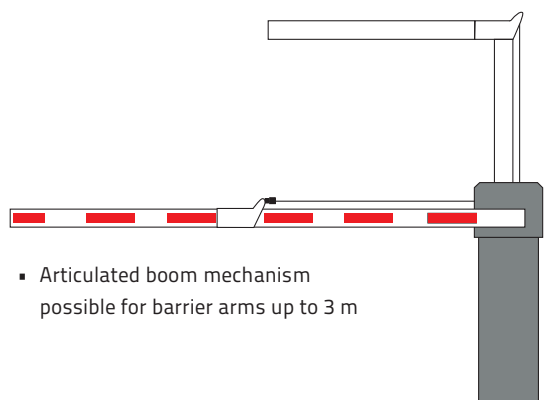


**Starting from barrier lengths of 4 m, a barrier arm support is necessary (optional):**

- Telescopic support post, adjustable in height from 0,6 up to 1 m, with or without electromagnetic lock
- Pendulum support



- The optional LED lighting increases the visibility of the barrier arm from both sides



- Articulated boom mechanism possible for barrier arms up to 3 m

## Magnus

Maximum length of the barrier arm	7 m*
Current Voltage (V)	240 VAC mono 1-ph
Frequency (Hz)	50
Nominal current (A)	0.4
Power (W)	70
Condenser (µF)	5
Torque (Nm)	18
Reduction	1/45
Number of revolutions (R/min)	14
Opening and closing time* (sec)	2 - 6
Weight (kg excl. barrier arm)	75
Temperature reach (°C)	-40** until +45

\*without options \*\* in operation